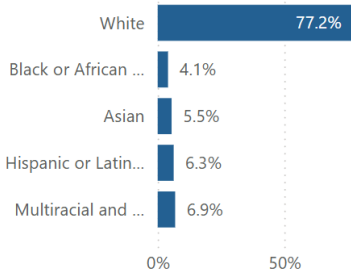


January 2024 Population and Demographics Estimates: Donaldson Run

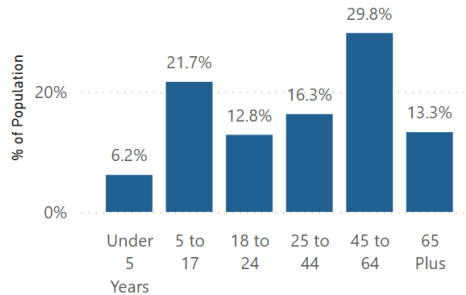
Population

2,695 Total People 1.1% Percent of Total 92.1% % with Bachelor's Degree or Higher 1.2% Persons Below Poverty

Race and Ethnicity



Age



Housing

948 Total Units 0.8% Percent of Total

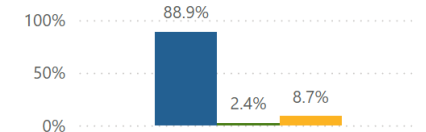
Housing Unit Type

Type	Units	% of Units
Single Family Detached	931	98.2%
Single Family Attached	17	1.8%
Apartment	0	0.0%
Condo	0	0.0%
Total	948	100.0%

Housing Costs as Percent of Income

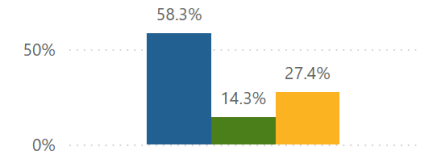
Owner Occupied Units

● Less than 30% ● 30-34% ● 35% Plus



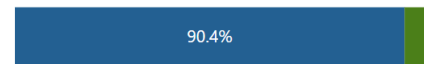
Renter Occupied Units

● Less than 30% ● 30-34% ● 35% Plus



Housing Unit Occupancy

● Owner Occupied ● Renter Occupied

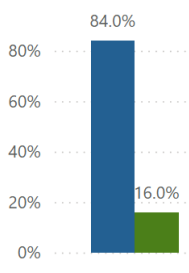


Households

925 Total Households 0.8% Percent of Total 2.91 Average Household Size \$442,170 Average Household Income 0.5% English Limited Households

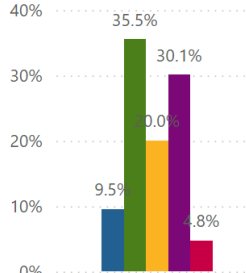
Household Type

● Family ● Non Family

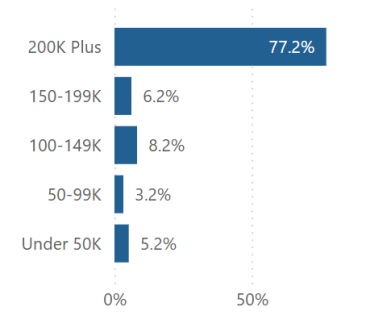


Persons Per Household

● 1 ● 2 ● 3 ● 4 ● 5 Plus



Percent of Households by Income



Employment

1,360 Civilian Labor Force 0.9% Percent of Total

72.4% Labor Force Participation Rate 0.7% Unemployment Rate

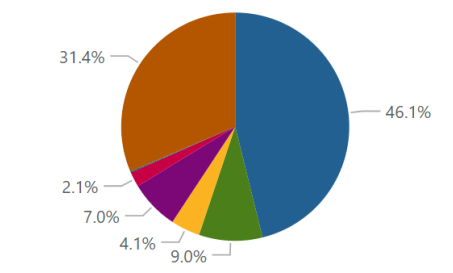
Place of Work

● In Arlington ● In VA (Not Arlington) ● Outside of VA



Means of Transportation to Work

● Drove Alone ● Carpool ● Public Transit ● Bike ● Walk



Notes: CPHD Population and Demographic Estimates (PDEs) are produced using the American Community Survey (ACS). The ACS is administered to a sample of the population and therefore contains margins of error (MOE). Exercise caution when PDEs show small portions for the population for any one geographic area or variable. In some cases, estimates may be unreliable due to large MOEs.